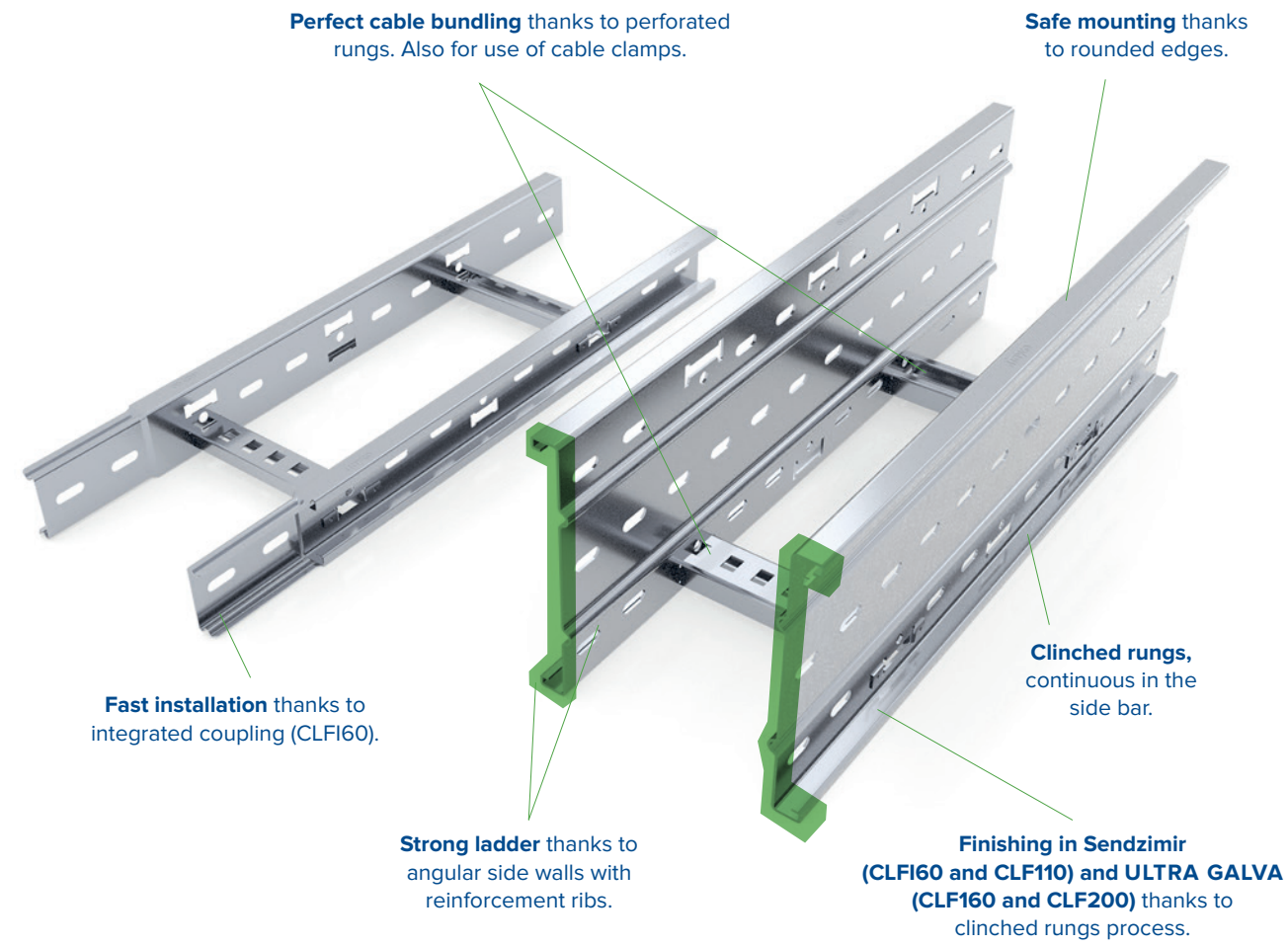
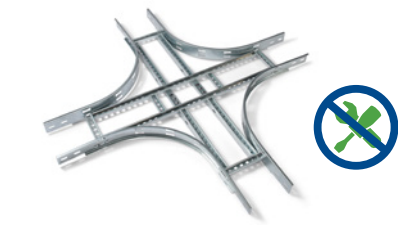


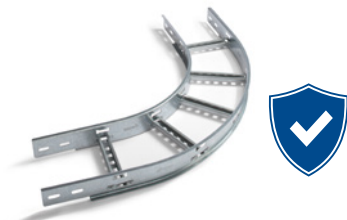
More than just a cable ladder...



Attention to detail...



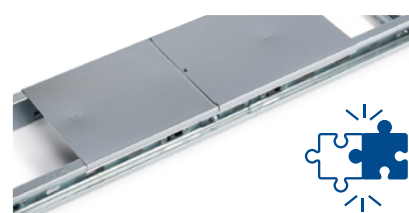
Fast mounting of accessories without coupling plates.



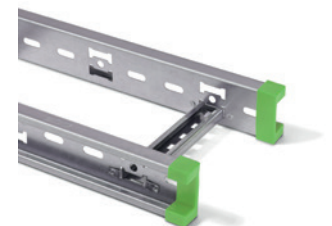
No damage to cables thanks to bends in radius.



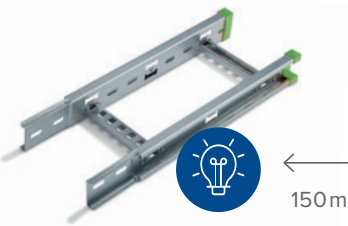
Universal accessories height independent mounting bracket.



Clip-on lids, 100% compatible for cable trays and mesh trays.

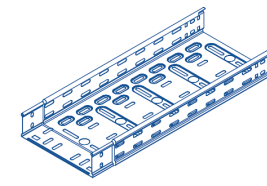


Safe to use thanks to PVC protection caps (CLF-PC).

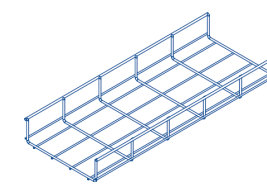


Rung distance adjusted for fire resistance.

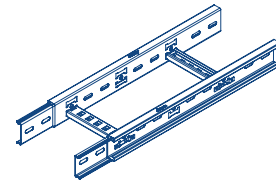
Trayco® product range



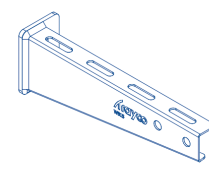
CT • CABLE TRAYS



MT • MESH TRAYS



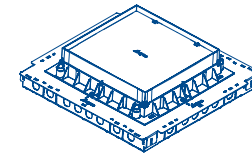
CL • CABLE LADDERS



MS • MOUNTING SYSTEMS



WM • WIRE MOUNTING



FS • FLOOR SYSTEMS



FR • FIRE RESISTANT



TAILOR MADE

Finishing

PG PRE GALVANIZED

DC HOT DIP

EG ELECTRO GALVANIZED

UG ULTRA GALVA

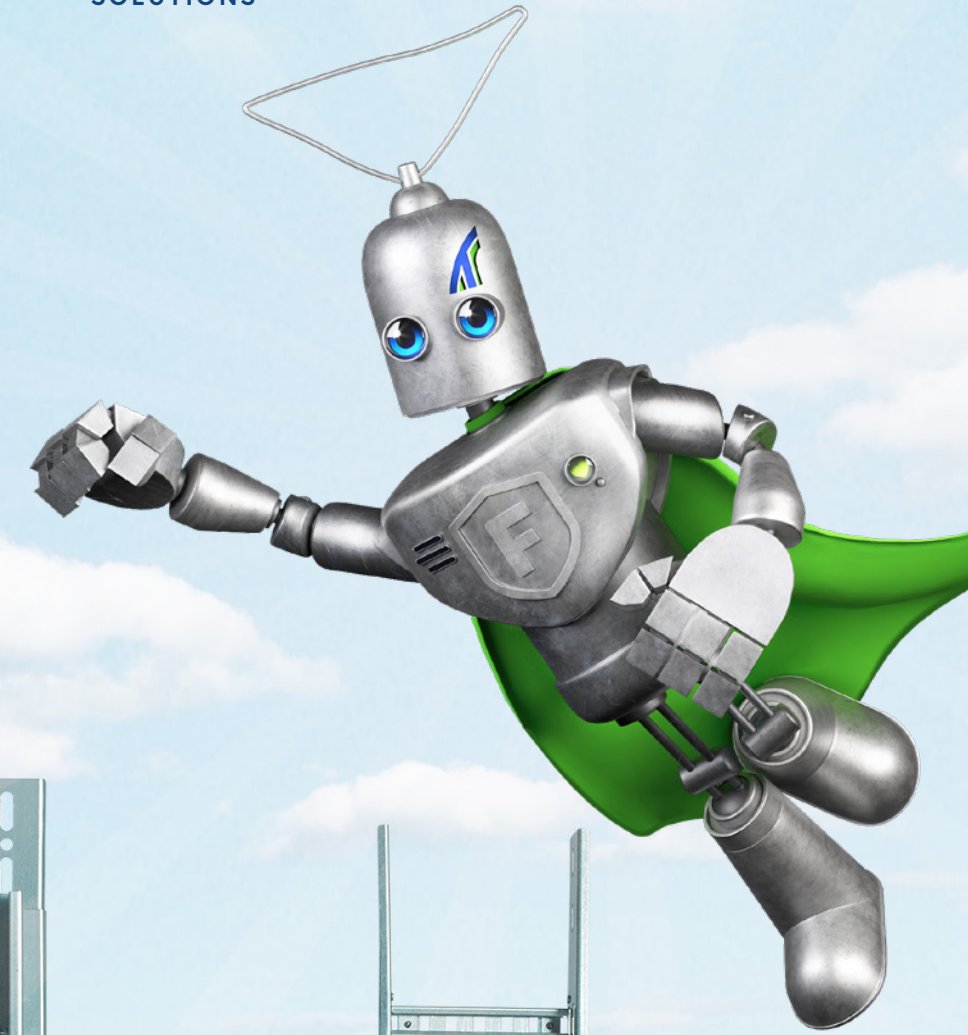
DU DUPLEX

SS STAINLESS STEEL

CO POLYESTER COATING



SUPERSTRONG
INDUSTRIAL MOUNTING
SOLUTIONS



Trayco®
MASTERS IN
CABLE MANAGEMENT



BEDRIJVENPARK COUPURE 5A • B-9700 OUDENAARDE
+32(0)55 23 29 90 • INFO@TRAYCO.EU

www.trayco.eu

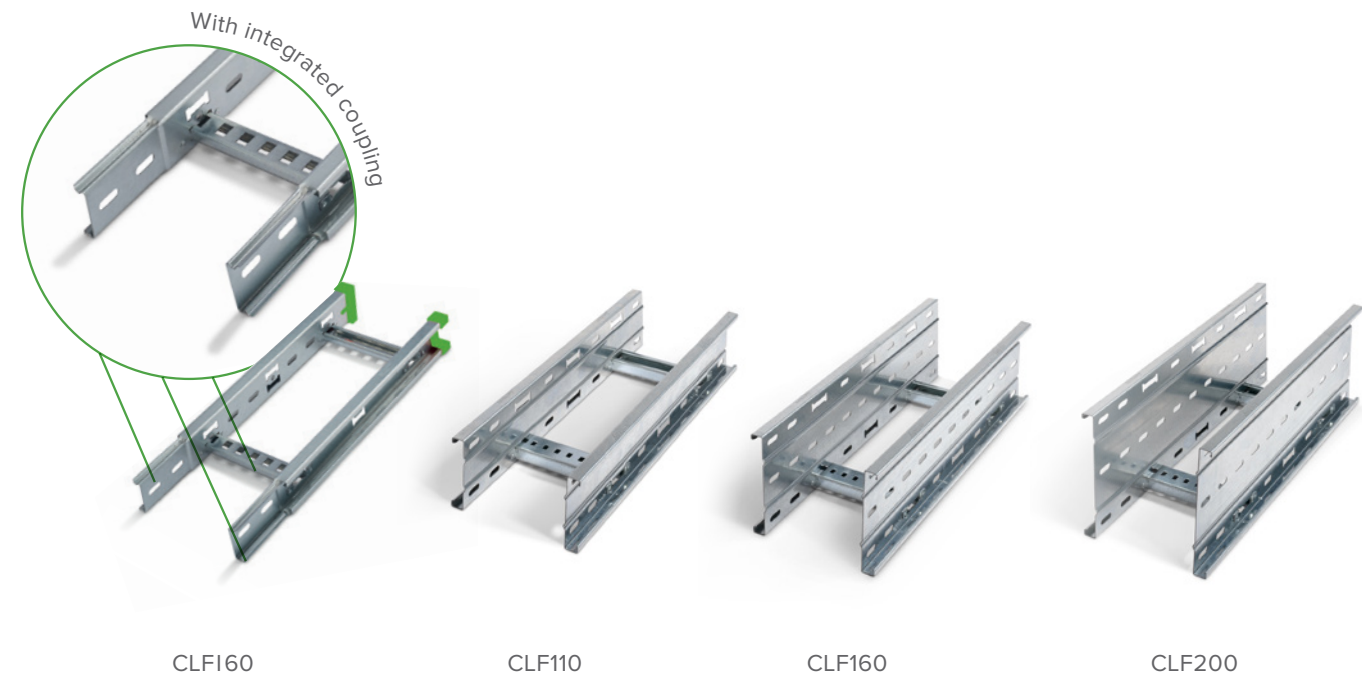
ENG

What?

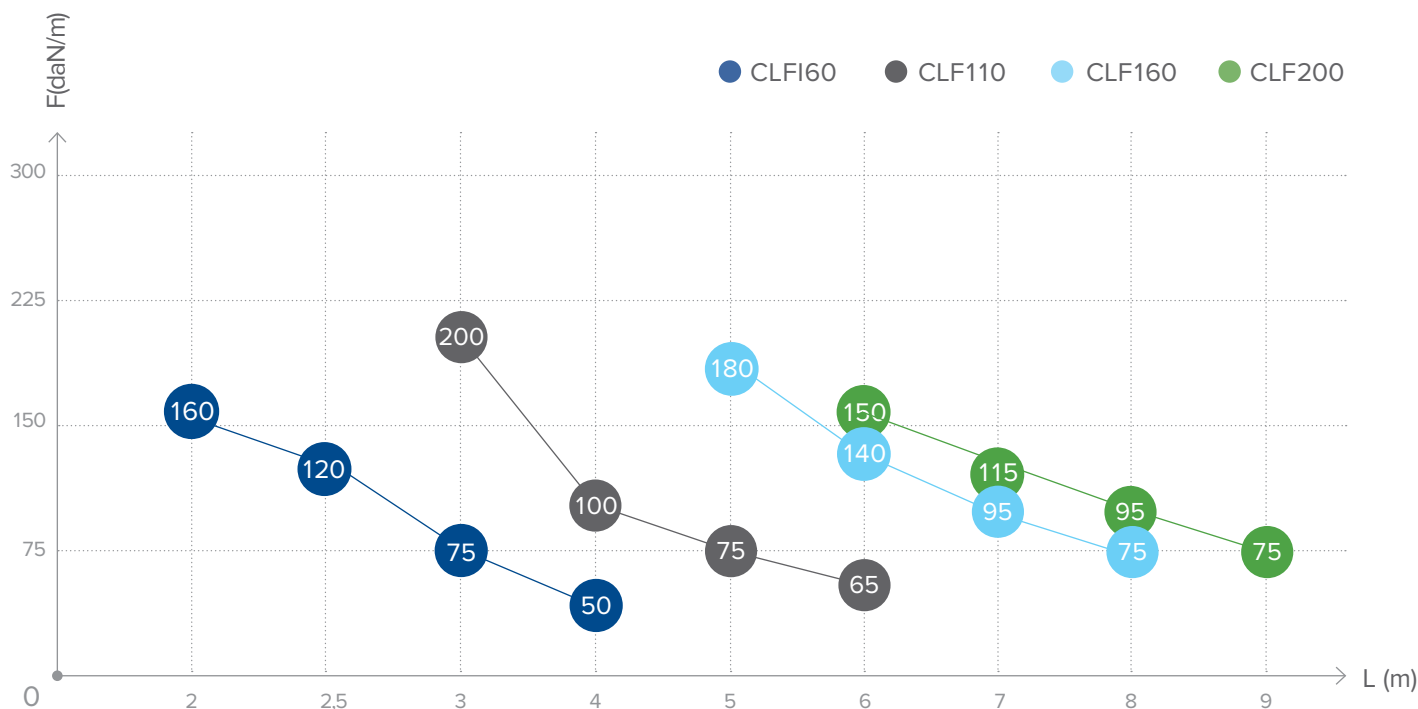
THE • FORCE is a **revolutionary range of cable ladders** for industrial mounting projects, however also applicable for other installations such as tunneling, oil & gas, petrochemical industry, power distribution, telecommunication, ...

How?

For the production, 100% Belgian, Trayco invested in ultramodern fully automatic machines. **Competitiveness** is paramount thanks to the the production process with clinched rungs, without sacrificing **corrosion resistance and strength**. Ladder types 160mm and 200mm are available in Ultra Galva.

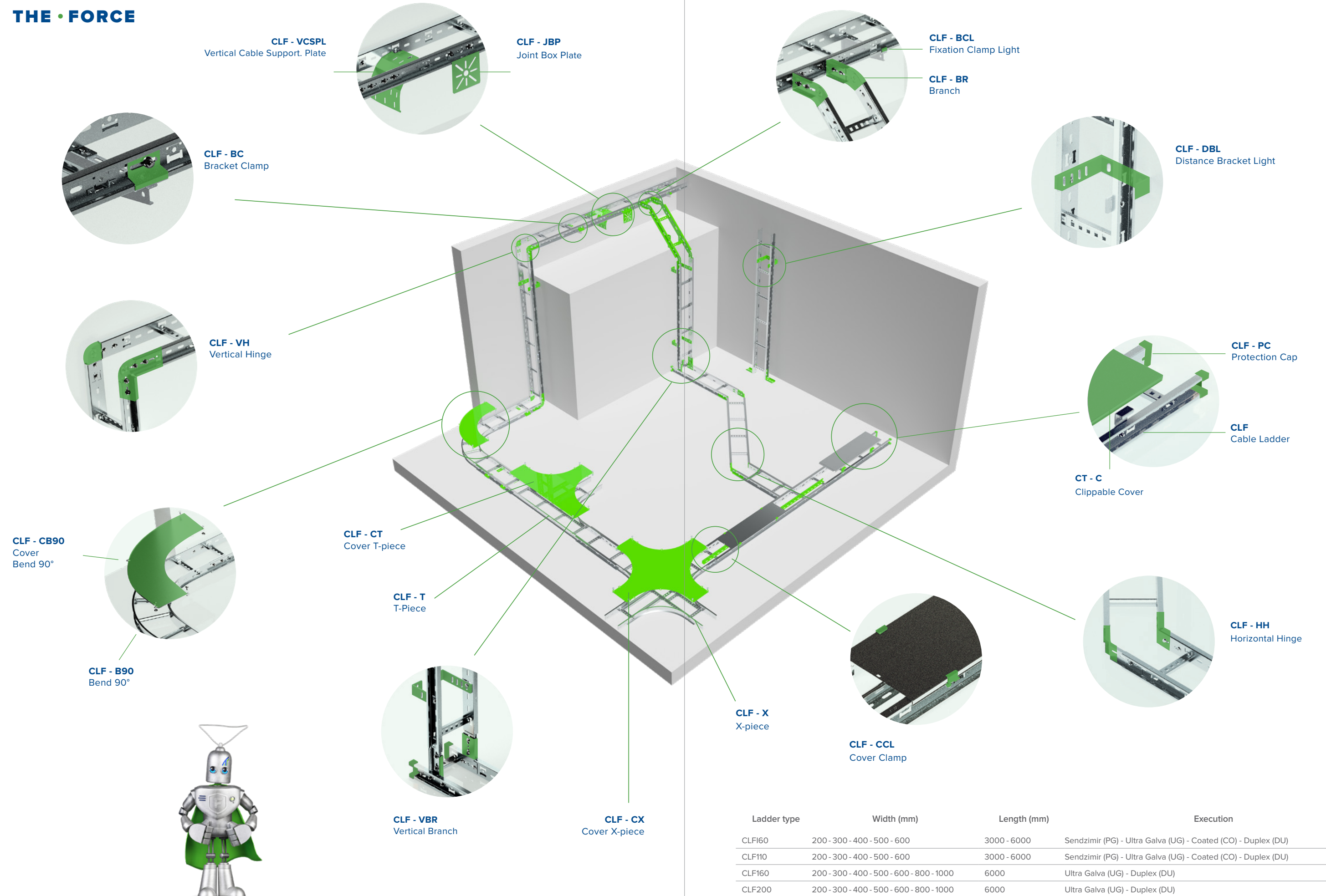


Load performance



Tested according to IEC 61537 (test type III for 3m lengths, test type II for 6m lengths)

OUTLINE DRAWING THE • FORCE



Ladder type	Width (mm)	Length (mm)	Execution
CLF160	200 - 300 - 400 - 500 - 600	3000 - 6000	Sendzimir (PG) - Ultra Galva (UG) - Coated (CO) - Duplex (DU)
CLF110	200 - 300 - 400 - 500 - 600	3000 - 6000	Sendzimir (PG) - Ultra Galva (UG) - Coated (CO) - Duplex (DU)
CLF160	200 - 300 - 400 - 500 - 600 - 800 - 1000	6000	Ultra Galva (UG) - Duplex (DU)
CLF200	200 - 300 - 400 - 500 - 600 - 800 - 1000	6000	Ultra Galva (UG) - Duplex (DU)